



Corporate Presentation

May 2026

RAPID MICRO BIOSYSTEMS ——— NASDAQ: RPID

© 2026, Rapid Micro Biosystems, Inc. | RAPID MICRO BIOSYSTEMS® and GROWTH DIRECT® are registered trademarks of Rapid Micro Biosystems, Inc., and the company logo is a trademark of Rapid Micro Biosystems, Inc.



Disclaimers

This presentation has been prepared by Rapid Micro Biosystems, Inc. (the "Company") solely for informational purposes. This presentation includes forward-looking statements within the meaning of Section 27A of the Securities Act of 1933, as amended, and Section 21E of the Securities Exchange Act of 1934, as amended. All statements contained in this presentation that do not relate to matters of historical fact should be considered forward-looking statements, including, but not limited to, sales of the Company's products, including placements of Growth Direct systems, and their impact on the Company's revenue; goals with respect to continued improvement in gross margins and cash management; and the Company's distribution and collaboration agreement and the terms thereof, including future collaboration opportunities between the parties; the benefits and features of the Company's products and technology; the Company's expectations as to the market for its products, including with respect to market size and product adoption; the Company's goal and pathway to achieve cashflow breakeven; the Company's revenue and gross margin targets, including the anticipated drivers thereof; and the Company's efforts to drive sustainable, long-term growth and shareholder value.

In some cases, you can identify forward-looking statements by terminology such as "outlook," "aim," "anticipate," "assume," "believe," "contemplate," "continue," "could," "due," "estimate," "expect," "goal," "intend," "may," "objective," "plan," "predict," "potential," "positioned," "seek," "should," "target," "will," "would" and other similar expressions that are predictions of or indicate future events and future trends, or the negative of these terms or other comparable terminology, although not all forward-looking statements contain these words. Forward-looking statements involve known and unknown risks, uncertainties and assumptions which may cause actual results to differ materially from any results expressed or implied by any forward-looking statement, including, but not limited to the Company's significant losses since inception; the Company's ability to meet its publicly announced guidance and other expectations and guidance about its business and operations; the effectiveness of the Company's sales and marketing efforts; the Company's ability to sell and place its products with customers; the Company's ability to develop new products and adapt to technological change; the Company's ability to establish and maintain its position as a leading provider of automated microbial quality control testing; competition within the Company's industry; the size of the total addressable market for the Company's products and purchasing patterns and practices within its target customer base; the Company's ability to maintain its manufacturing operations; the Company's efforts to improve gross margins for its products; the Company's ability to manage costs in operating its business; the Company's ability to maintain and grow its relationships with its collaborators, including MilliporeSigma; the Company's ability to manage its collaboration with MilliporeSigma and to realize the intended benefits of the distribution and collaboration agreement; the impact of the terms of the distribution and collaboration agreement on the Company's business and results of operations; the Company's ability to negotiate and enter into future collaboration opportunities and to realize the intended benefits therefrom; the impact of the Company's existing and any future indebtedness on its ability to operate its business; the Company's ability to access any future tranches under its debt facility and to comply with all of its obligations thereunder; risks related to third-parties; the Company's ability to retain key management and other employees; risks related to regulatory and intellectual property matters; risks related to supply chain disruptions and the impact of inflation; the impact of macroeconomic volatility on the Company's business and operations; and the other important factors outlined under the caption "Risk Factors" in the Company's most recent Annual Report on Form 10-K filed with the Securities and Exchange Commission ("SEC") on March 12, 2026, as such factors may be updated from time to time in its other filings with the SEC, which are available on the SEC's website at www.sec.gov and the Investor Relations page of its website at investors.rapidmicrobio.com.

Although the Company believes that the expectations reflected in its forward-looking statements are reasonable, it cannot guarantee future results. The Company has no obligation, and does not undertake any obligation, to update or revise any forward-looking statement made in this presentation to reflect changes since the date of this presentation, except as may be required by law.

This presentation shall not constitute an offer to sell, or the solicitation of an offer to buy, any securities, nor shall there be any sale of securities in any states or jurisdictions in which such offer, solicitation or sale would be unlawful. You agree to keep any information provided herein confidential and not to disclose any of the information to any other parties without prior express written permission of the Company. Neither the information contained in this presentation nor any further information made available by the Company or any of its affiliates or employees, directors, representatives, officers, agents or advisers in connection with this presentation will form the basis of, or be construed as, a contract or any other legal obligation.



Our vision

We are transforming a critical, regulated part of the global pharmaceutical manufacturing process, bringing microbial quality control into the 21st century.

**The new standard in
microbial quality control**





The standard in automating microbial quality control

2025 REVENUE

\$33.6M
Total Revenue

20%
Year / Year Growth

\$17.8M
Recurring Revenue

GLOBAL SYSTEMS ⁽¹⁾

190
Cumulative Placements

155
Cumulative Validations

~20
Countries

CUSTOMERS

75%
Top 20 Global Pharma ⁽²⁾

86%
Approved CAR-T Manufacturers



Strong Q1 2026 results reinforce consistent long-term execution

SELECT Q1 2026 HIGHLIGHTS



Exceeded Q1 revenue, system placement and validation guidance; 14th consecutive quarter of meeting / exceeding revenue guidance



Product revenue growth of 36%, with 30%+ consumable revenue growth vs. Q1 2025



Recurring revenue grew 28% vs. Q1 2025; constituted 63% of total revenue



Meaningful product gross margin expansion with 15-percentage point increase vs. Q1 2025



Following receipt of largest-ever system order from Amgen in Q4 2025, received multi-system follow-on order from Samsung Biologics to expand their Growth Direct deployment



Advanced strategic partnership with MilliporeSigma to drive growth, margin expansion and innovation including execution of Services Agreement



Announced anticipated H2 2026 release of next-generation cloud native software that is expected to deliver additional value to Growth Direct customers through AI-driven analytics and insights

Q1 2026 RESULTS¹

ACTUAL¹

GUIDANCE²

P&L and KPIs

Total Revenue	\$8.0M	\$7.5M+
---------------	---------------	----------------

Recurring Revenue	\$5.1M	
-------------------	---------------	--

Systems Placed	6	At least 5
----------------	----------	-------------------

Systems Validated	5	At least 3
-------------------	----------	-------------------

Gross Margin	5%	Mid-single digit %
--------------	-----------	---------------------------

Balance Sheet

Cash & Investments	\$23M
--------------------	--------------

Outstanding Debt	\$20M
------------------	--------------

Remaining Debt Facility Capacity	\$25M
----------------------------------	--------------

Microbial quality control (MQC) has not kept up with pharma industry innovation

FACTORS DRIVING CHANGE

Scientific and technology innovation



Growing demand for more complex therapies



Faster & leaner manufacturing



Data integrity & security focus



Regulatory scrutiny

TODAY



Discovery & research

High-throughput R&D automation

TODAY



Quality control (QC) & Analysis

TODAY



Bioprocessing & manufacturing

Flexible single use technologies

Challenges in a traditional MQC lab



High volume testing and mandated by regulators

Insecure and lacking data integrity

Subjective and prone to human error

Manual, paper-based and slow

Modernizing MQC with the Growth Direct® platform

The only fully automated,
high-throughput and secure MQC solution...



**Proprietary
Consumables**



**Data &
Software**



**Global Validation &
Support Services**

...designed to deliver a compelling value proposition



**Data
Integrity**

Supports global quality **regulatory compliance** and improved data handling and management



**Operational
Efficiency**

Enables **faster decision making** by accelerating time to results by 50% or faster compared to the traditional method

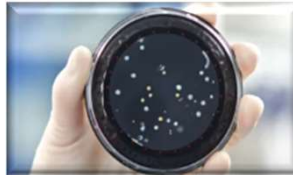


**Insight &
Accuracy**

Substantially reduce human quality control errors and the risk of costly recalls and regulatory interventions

THE GROWTH DIRECT® (GD) PLATFORM

Growth Direct[®] automates all MQC tests in pharma manufacturing



For Environmental Monitoring

- Tryptic Soy Agar (TSA) with Lecithin
- TSA with LP80HT (histidine and thiosulphate)



For Water Testing

- R2 Agar (R2A)



For Bioburden Testing

- Sabouraud Dextrose Agar (SDA) for yeasts and molds
- Tryptic Soy Agar (TSA) for general product testing



For Sterility Testing

- Rapid Sterility Media (RSM)

The only fully automated
non-destructive growth-
based
technology impacting
mission-critical microbial
QC testing applications

Growth Direct[®] modernizes MQC

MANUAL WORKFLOW

1. PULL QC TEST FORM	2. FILL OUT ASSAY INFO	3. PREPARE SAMPLES	4. LOAD INCUBATOR	5. PULL SAMPLES	6. PERFORM COUNTS	7. RECORD COUNTS	8. RETURN SAMPLES
9. SHIFT SAMPLES	10. PULL SAMPLES	11. PERFORM COUNTS	12. PERFORM DUAL-READ	13. RECORD COUNTS	14. KEY INTO LIMS	15. DISCARD	 RESULTS

- Manual & subject to error
- 15 steps
- 5-14 days to result / test
- Unsecured

GROWTH DIRECT[®]

AUTOMATED WORKFLOW

1 Prepare sample & automated loading



2 Automated incubation and analysis & data handling



✓ Results



- Automated & accurate
- 2 steps
- Results in half the time
- Full data integrity

The Growth Direct[®] System brings MQC into the 21st Century

FACTORS DRIVING CHANGE

Scientific and technology innovation



Growing demand for more complex therapies



Faster & leaner manufacturing



Data integrity & security focus



Regulatory scrutiny

TODAY

QC & Analysis

TODAY



Discovery & research

High-throughput R&D automation



TODAY



Bioprocessing & manufacturing

Flexible single use technologies

Large and growing TAM for pharma MQC testing

Our core pharma market is significant with strong fundamental growth

~430M
Tests Annually



~\$5B
Recurring Annual TAM

+

+

~10,000
Growth Direct
Systems Globally



~\$5B
One-time TAM

Pharma MQC Market Growth

CAGR 2026 – 2034

8%

Total Market

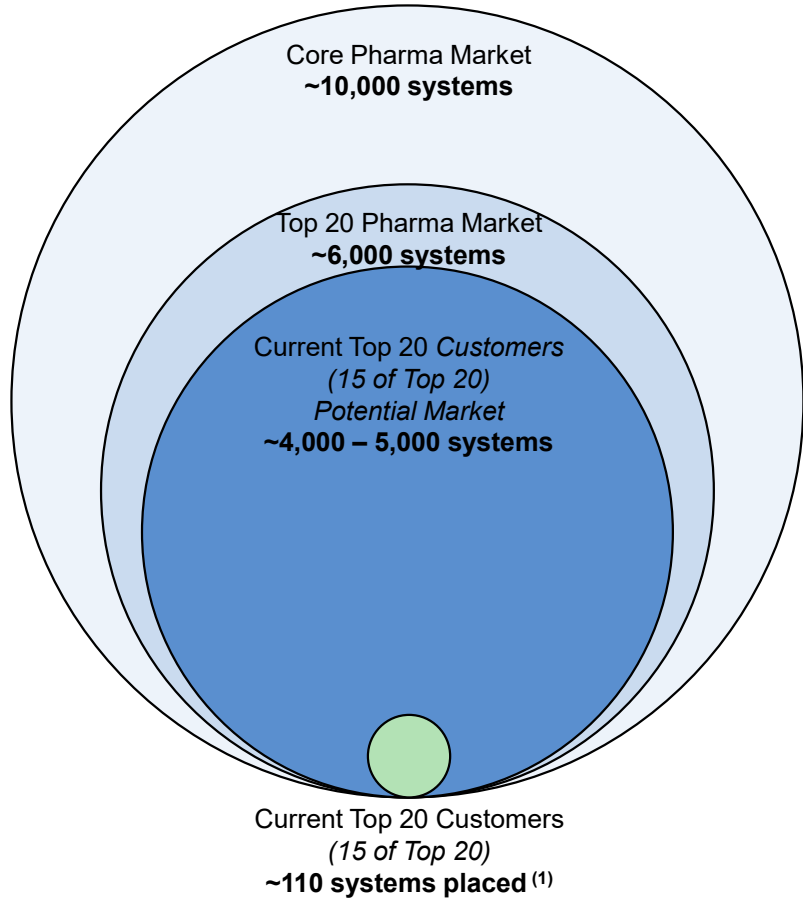
7%+

Biologics (excl. C>)

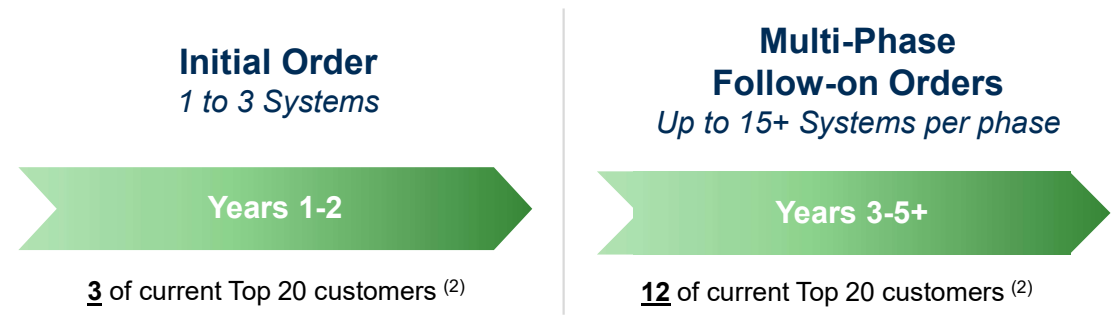
30%+

Cell & Gene Therapies

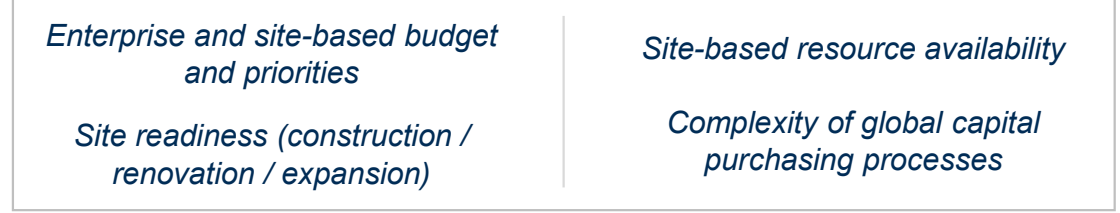
Broad initial traction in Top 20 pharma provides compelling expansion opportunity



Illustrative pharma customer ordering cadence



Drivers of customer order size and timing



⁽¹⁾ Subset of 190 cumulative systems placed across all customers as of December 31, 2025.

⁽²⁾ As of December 31, 2025.

Market forces pushing pharma industry to automation



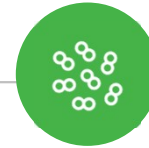
Large and Growing Market

\$5B annual recurring revenue + \$5B global system opportunity



Regulatory Pressure

Increasing regulatory scrutiny and enforcement around data integrity and quality



Industry Change

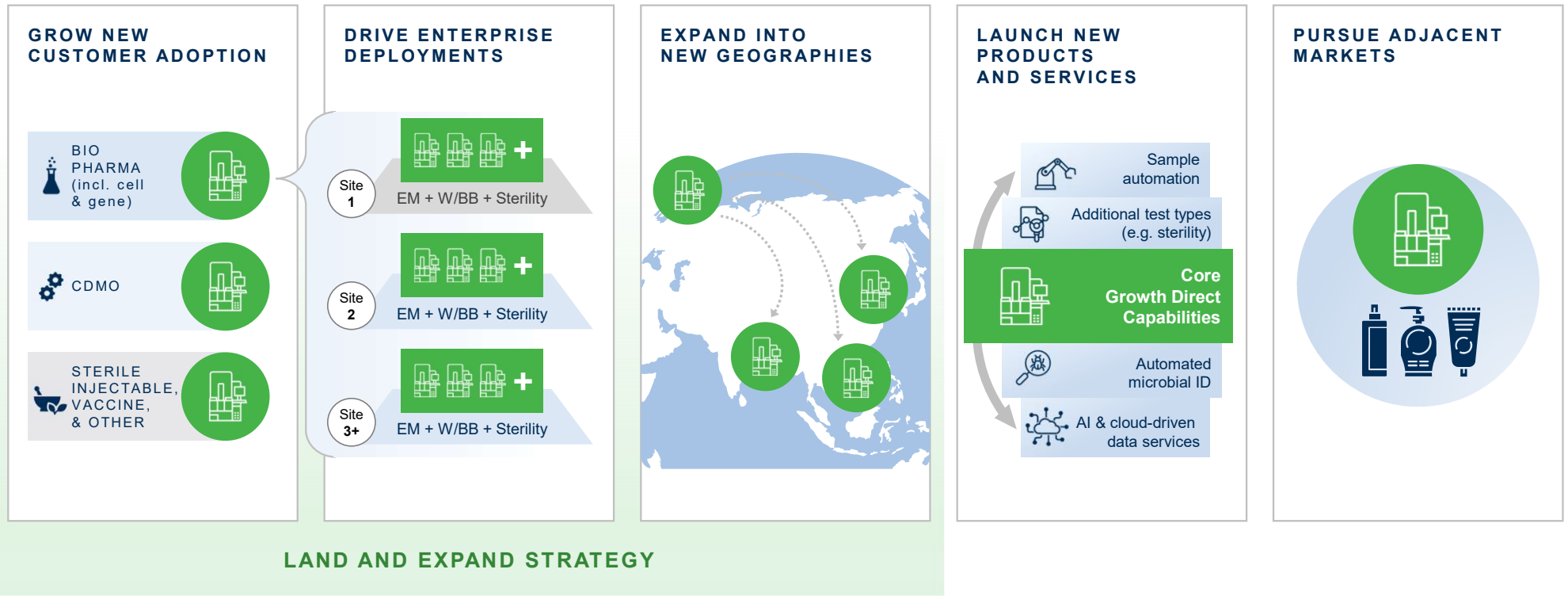
Growth in complex biologics and cell & gene therapies which require faster, more accurate, higher throughput testing capabilities



Expanding Manufacturing Capacity, Especially U.S. Reshoring

Increasing investments in new manufacturing capacity create significant opportunity for automation

Land and expand growth strategy augmented by innovation



Customer base includes 75% of the top 20 global pharma companies¹ with significant growth potential

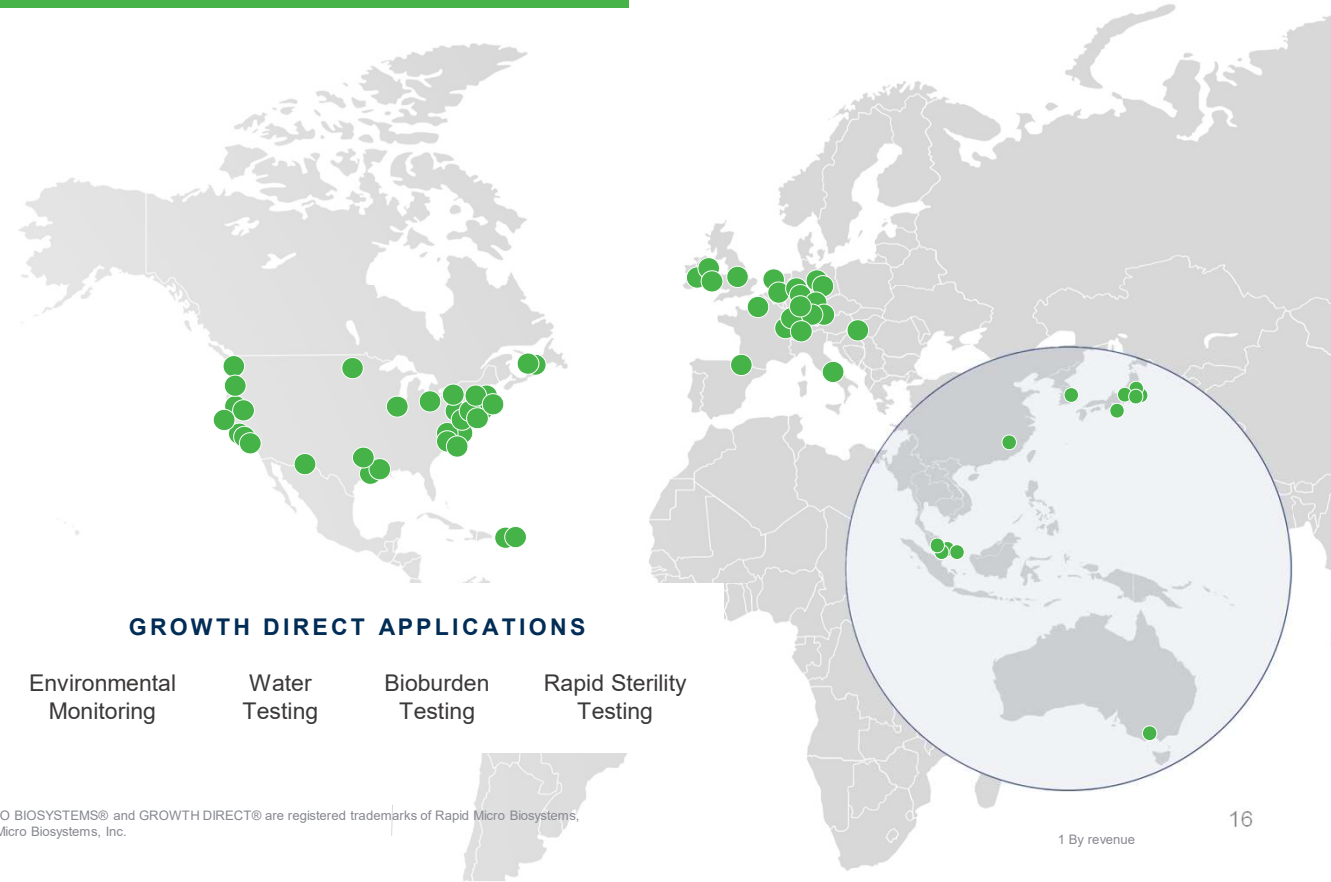
CUSTOMER SEGMENTS WITH ESTABLISHED USE

Biologics Cell & Gene Therapy / CAR-T CDMO

Personal Care Products Small Molecules

<p>190 cumulative systems placed</p>	<p>75% of top 20 global pharma are customers</p>
<p>86% of approved CAR-T manufacturers have GD system placed</p>	<p>155 cumulative systems validated</p>
<p>~9M cumulative consumables sold</p>	<p>100+ customer manufacturing sites</p>

GLOBAL SITES WITH GROWTH DIRECT SYSTEMS



GROWTH DIRECT APPLICATIONS

- Environmental Monitoring
- Water Testing
- Bioburden Testing
- Rapid Sterility Testing

Strategic opportunity to own the QC & Analysis workflow

DISCOVERY & RESEARCH

PROCESS DEVELOPMENT

QC & ANALYSIS

WORKFLOW (PREP TO ANALYSIS)

BIOPROCESSING / MANUFACTURING

CLINICAL / DIAGNOSTIC



Widespread adoption of automation, high degree of organized competition

Establishing the new standard in QC & Analysis

Widespread adoption of automation, high degree of organized competition

Distribution & Collaboration Partnership with Merck KGaA¹ (MilliporeSigma)

Partnership Highlights

- **Global, 5-year, co-exclusive** right to sell Growth Direct systems & consumables
- **Minimum commitment** for Growth Direct system purchases in each of the first two years
- Leverage MilliporeSigma's extensive salesforce to **deepen penetration in core pharma market** worldwide
- Access to segments beyond pharma including **personal care, medical device, cosmetics and food & beverage**
- Collaboration on **Supply Agreement** to drive efficiencies, reduce product costs & **accelerate gross margin expansion**
- Collaboration on **Joint Product / Technology Innovation**



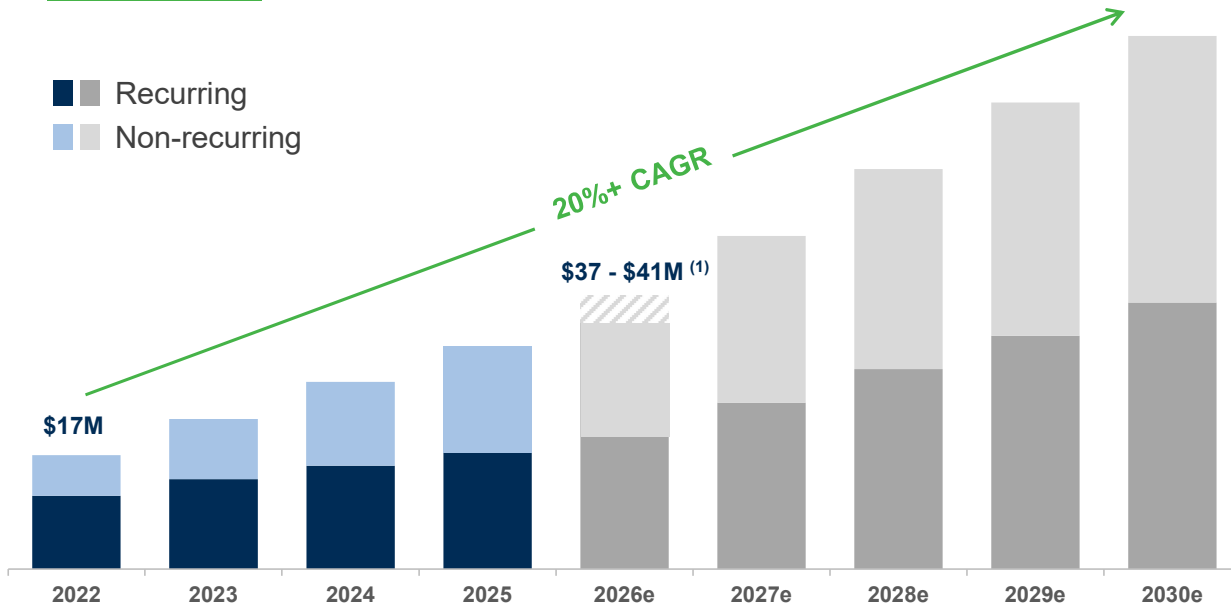
Advances and accelerates top strategic priorities

- ✓ **Accelerating Growth Direct system placements**
- ✓ **Expanding gross margins**
- ✓ **Driving innovation**

Delivering consistent 20%+ revenue growth

REVENUE

■ Recurring
■ Non-recurring



(1) 2026 revenue guidance range issued on March 12, 2026

Note: Data for 2026 – 2030 represents estimated future revenue based on current expectations, actual results may differ

Potential Revenue Growth Drivers

- Scale existing Top 20 pharma customers through site and application expansion
- Win new Top 20 and core pharma customers
- Expand new products / services
- Meaningful MilliporeSigma contribution across core and adjacent markets beginning in 2026
- Leverage global automation standardization
- Capture U.S. reshoring & capacity build-out

Diverse drivers of potential significant gross margin expansion



Systems

- Direct material cost reduction
- Increased manufacturing efficiencies
- Expansion of outsourcing



Consumables ⁽¹⁾

- Direct material cost reduction
- Increased automation line throughput and other manufacturing efficiencies
- Automation of manual work
- Conversion of variable costs to scalable fixed costs (e.g., packaging)
- Potential for outsourced manufacturing over time



Overhead ⁽¹⁾ (Systems & Consumables)

- Current cost structure reflects major upfront investments
- This provides significant future capacity with minimal incremental investment
- Significant cost leverage is expected to continue to drive outsized gross margin expansion



Services ⁽¹⁾

- Significant leverage as service revenue and installed base grow faster than headcount needs
- Reductions in time / cost to validate and service customer systems

2029 – 2030
Gross Margin
Targets

50%+ ⁽²⁾

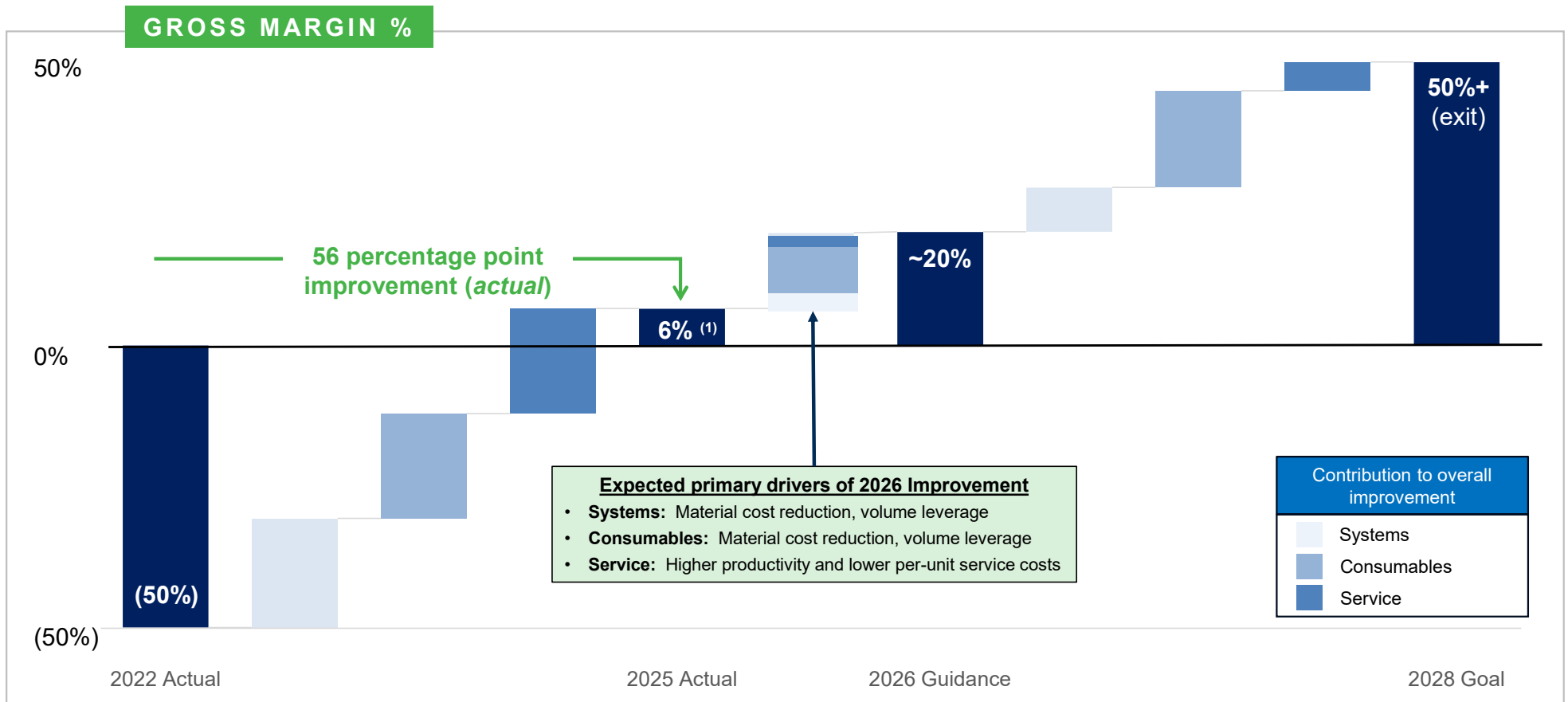
60%+ ⁽²⁾

50 - 60%+ ⁽²⁾

(1) Area includes gross margin expansion opportunities related to MilliporeSigma partnership

(2) Represents 2029 – 2030 gross margin targets; actual results may differ

Significant progress and clear path to potential 50%+ gross margin



Note: Data for 2026 – 2028 represents estimated future gross margin percentage based on current expectations, actual results may differ

Strategically well positioned for growth and margin expansion in 2026 and beyond

- Market leading product with strong growth and global adoption by top tier customer base
- Commercial momentum driven by multi-system orders and market tailwinds
- Meaningful contribution to 2026 system placements from MilliporeSigma
- Strong, durable recurring revenue driven by consumables and services
- Significant margin expansion achieved with potential continued expansion in 2026 and beyond
- Strengthened balance sheet with \$45 million credit facility

A focused, scalable growth strategy built to deliver sustainable, long-term shareholder value

Creating the future of rapid, secure MQC automation to drive **sustainable, long-term growth and shareholder value**



Operating behind strong barriers to entry

First mover advantage,
little competition & robust
patent portfolio



Growth Direct® is the industry-leading platform

Chosen by 75% of
the top 20 global pharma
companies ⁽¹⁾ with significant
commercial runway



Enabling advanced pharmaceutical manufacturing

Growth Direct systems placed
with 86% of approved CAR-T
manufacturers



An expanding \$10B+ market

Dominated by manual,
legacy processes that face
increasing FDA scrutiny



Attractive, high-growth business model

Driving high-yield
recurring revenue



Thank you

